

FDV

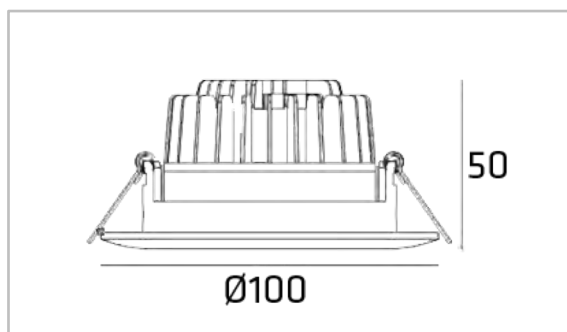
Comet Quick Direct Dim-til-varm

El nr	32 560 06
Article nr	210555
EAN	7090015371670



Lysteknikk

Type lyskilde	LED (Sharp COB LED)
Spennning	230VAC 50/60Hz
Watt	6W
Systemeffekt (W)	8,4W
Effektiv lysstrøm (lm)	440lm
Effekt	52lm/W
Fargetemperatur	2000K-2800K
Fargegjengivelse (CRI)	Ra>80
MacAdams faktor	SDCM<3
Levetid	50000 L80
Lysspredning	60°



Dimmetype

Type	Dimbar faseavsnitt
------	--------------------

Beskyttelse

Isolasjonsklasse	Klasse II
IP-grad	IP44

Montering/Tilkobling

Montering	Innfelling
Kobling	Hurtigklemme

Materialer og overflater

Armaturhus	Aluminium die-cast
Farge	Matt sort (RAL 9005)
Optikk/Reflektor	Acrylic/Alu

Dimensjoner (mm)

Høyde (H)	50 mm
Diameter (D)	Ø100 mm
Innfellingsdiameter	Ø78-85 mm
Vekt	0,25 kgs

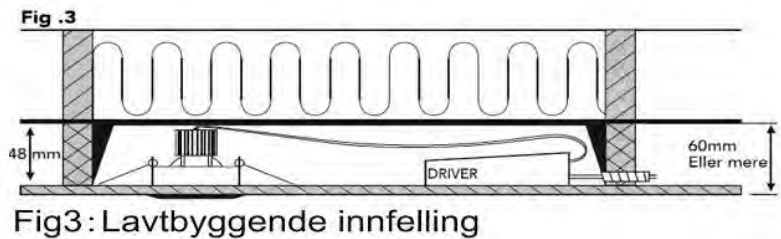
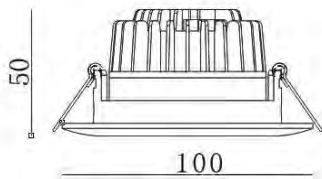
Energi og godkjenning

Energiklasse	A++
Godkjenning	CE
Safety standard	EN 61347-2-13:2014+AMD1:2017, EN 6134701:2015
EMC standard	EN 55015:2013+A1:2015, EN 61547:2009, EN 61000-3-2:2014, EN 61000-3-3:2013

Forpakning

Eske dimensjon	130x110x75mm
Eske Vekt	0,265 kgs
Kartong Dimensjon	570x540x170 mm
Antall/Kartong	40 stk
Kartong Vekt	13,0 kgs

Comet Quick Direct 6W Dim-til-Varm



Warning:

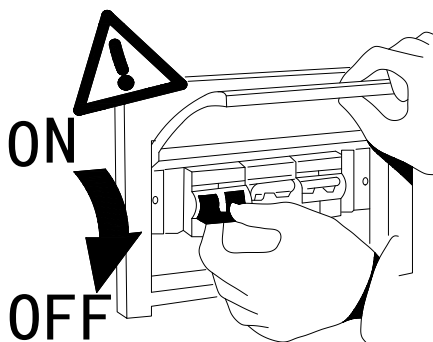
1. Before starting of installation, please read this leaflet carefully and keeps it for future reference.
2. When installation, please conforms to the instruction of equipment and installed by professionals.
3. Make sure correct voltage applied before use and keep away from heat and vibration source.

I . Main parameter

Rated voltage: 200-240V 50Hz
LED rated power: 6W
System Power: 8.4W-1W
LED: Sharp COB
LED Driver: Constant Current 350mA
Color Temperature: 2800K-2000K
Protection: CLASS II
Beam Angle: 60°
Cut-out size: Ø78-85mm
Product Size: Ø100mmxH50mm

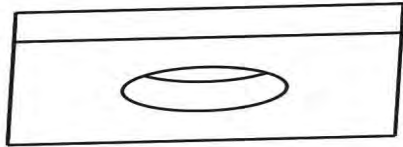
II . Installation direction maintenance

1. First, please make sure all parts are ready when open the box and prepare the installation tools the lighting needs.
2. Second, should turn off the power.



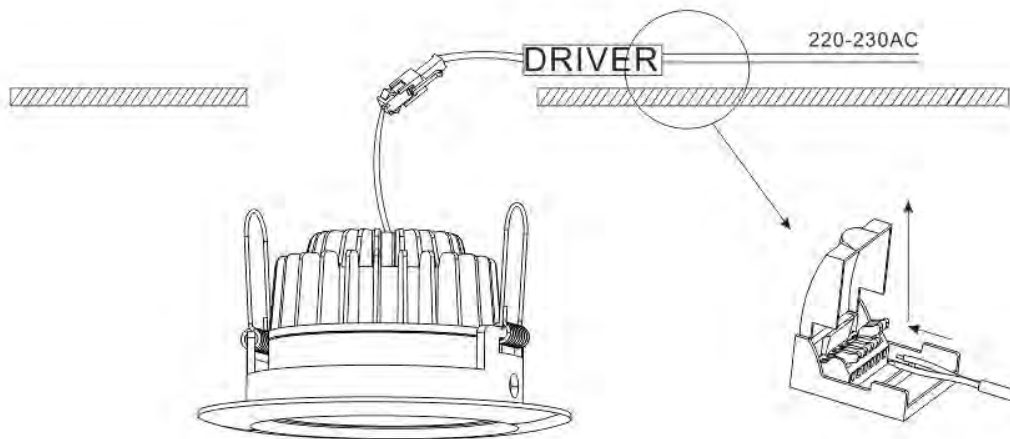
III. Installation steps (please see the drawings)

1. Cut-out for the downlight.

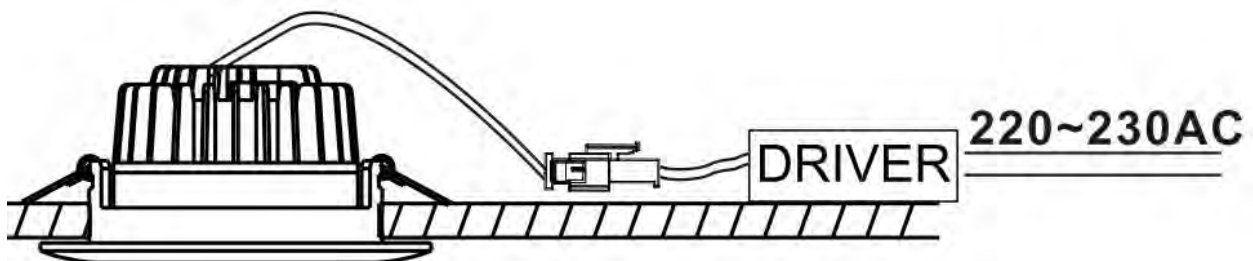


Cut-out: Ø78-85mm

2. Connect Mains supply to the quick connection terminal block of LED driver.
Slide the mounting spring clips into the ceiling cut-out and push the luminaire up into cutting hole. Ensure that it is securely located.



3. Switch on the power supply



IV. Safety directions

1. Should be installed by professional electrician.

 Warning	<p>If the external flexible cable or cord of this luminaire is damaged, it shall be exclusively replaced by the manufacturer or his service agent or a similar qualified person in order to avoid a hazard.</p> <p style="text-align: right;">-For type Y attachments</p>
--------------------	---

2. If there is any damage on the housing or glass cover, should view it as disqualified products that can not be used.

