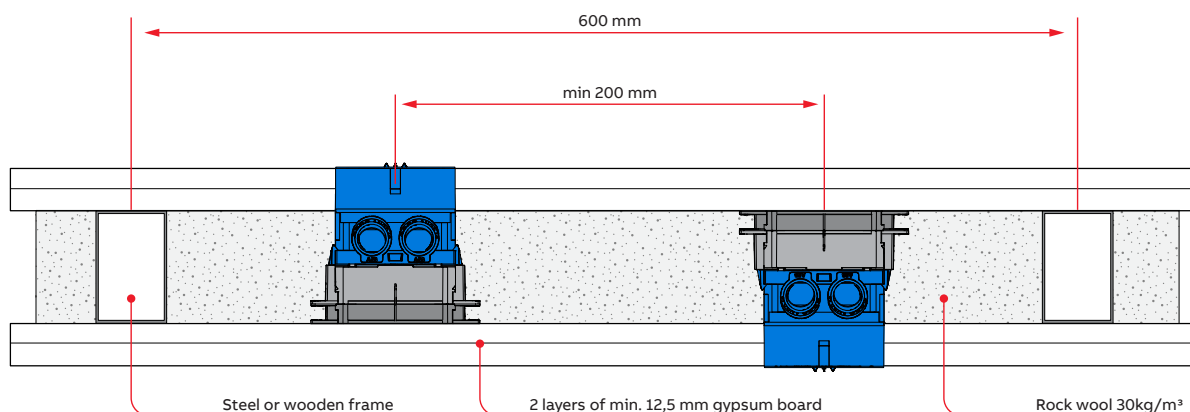


Installation instructions for System Ideal boxes in EI60 fire-rated walls

ABB's System Ideal boxes are tested to be used in EI60 fire-rated walls. Fire resistance of structures has been tested at Eurofins Expert Services Oy according to standards EN 1364-1:2005 (Test re-ports no. EU-FI29-22004748-T1 and no. VTT-S-03182-12. Statements no. EUFI29-23000201-T1 and no. VTT-S-00406-18).



Minimum requirement for wall structure:

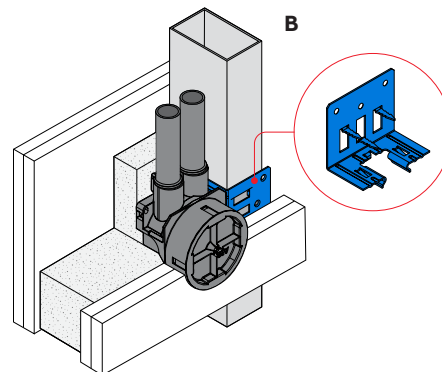
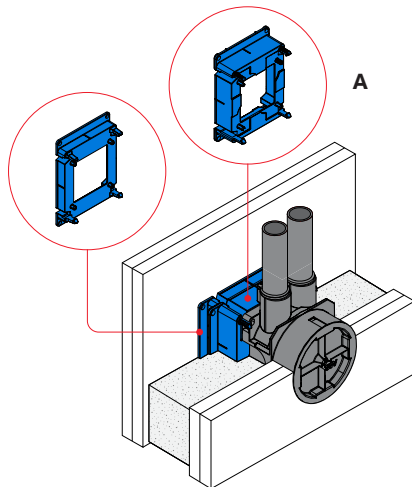
- 2 x 12,5 mm standard gypsum board on both sides of the wall
- Steel or wooden frame c/c 600 mm
- 70 mm rock wool insulation (Min. density 30 kg/m³)*
- When boxes are installed on opposite sides of the wall c/c min 200 mm
- Ø74 mm hole for AU60.1, AU60.10, AU5.6 and AU60.5 boxes
- Ø84 mm hole for AU67 boxes
- Rock wool needs to be installed behind boxes and inside box supports

*AU60.10FR mounting box needs to be used if glass wool (Min. density 10 kg/m³) is used for insulation

APPROVED INSTALLATIONS FOR SINGLE BOXES:

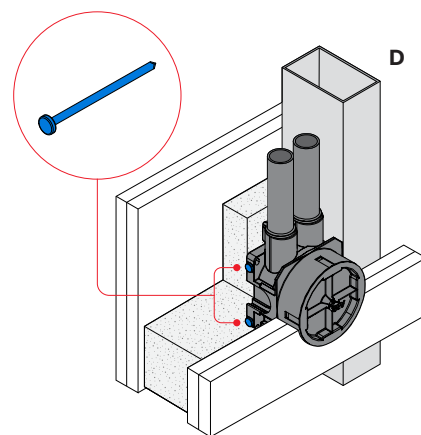
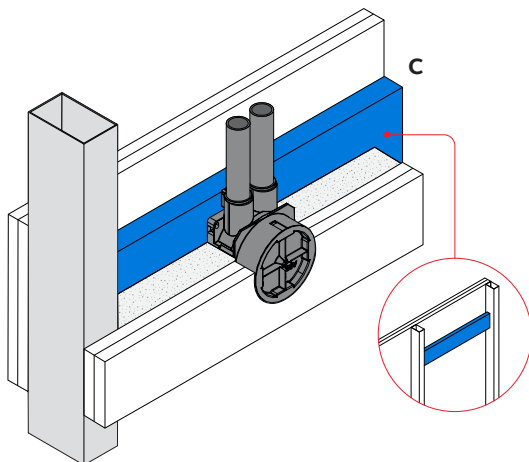
Installations:

A
B



Installations:

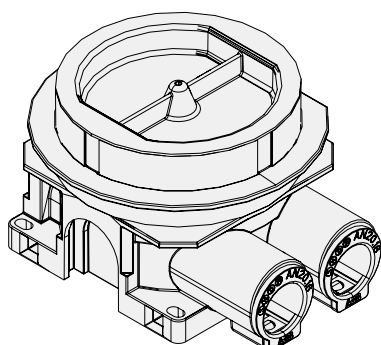
C
D



- A with plastic box support (AS27/AS27.12)
- B with metal bracket (AS26.12/AS26.24)
- C with wooden board
- D nailing to frame

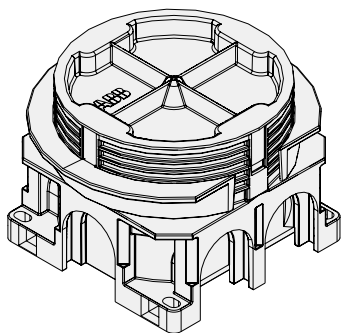
APPROVED SINGLE BOXES:

AU60.1



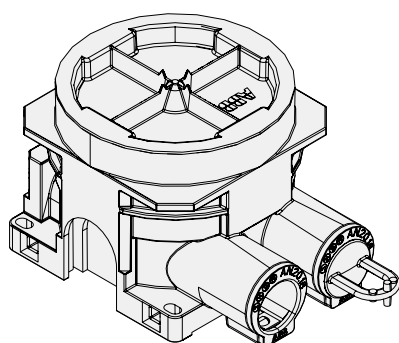
- Installation height max 2900 mm from floor (or min 100 mm from ceiling).
- Approved installations: A with plastic box support (AS27/AS27.12), B with metal bracket (AS26.12/AS26.24), C with wooden board and D nailing to frame.

—
AU60.5



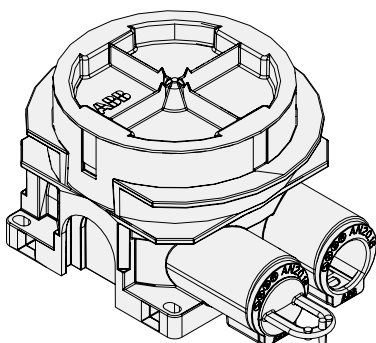
- Installation height max 2900 mm from floor (or min 100 mm from ceiling).
- Approved installations: A with plastic box support (AS27/AS27.12), B with metal bracket (AS26.12/AS26.24), C with wooden board and D nailing to frame.

—
AU5.6



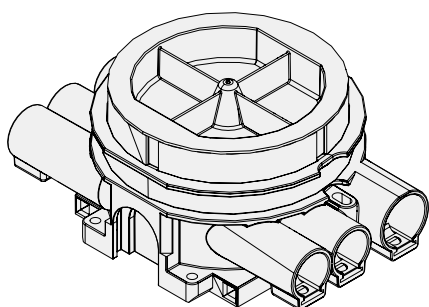
- Installation height max 2100 mm from floor (or min 100 mm from ceiling)
- Approved installations: A with plastic box support (AS27/AS27.12), B with metal bracket (AS26.12/AS26.24), C with wooden board and D nailing to frame.

—
AU60.10



- Installation height max 2900 mm from floor (or min 100 mm from ceiling).
- Approved installations: B with metal bracket (AS26.12/AS26.24), C with wooden board and D nailing to frame.

—
AU67

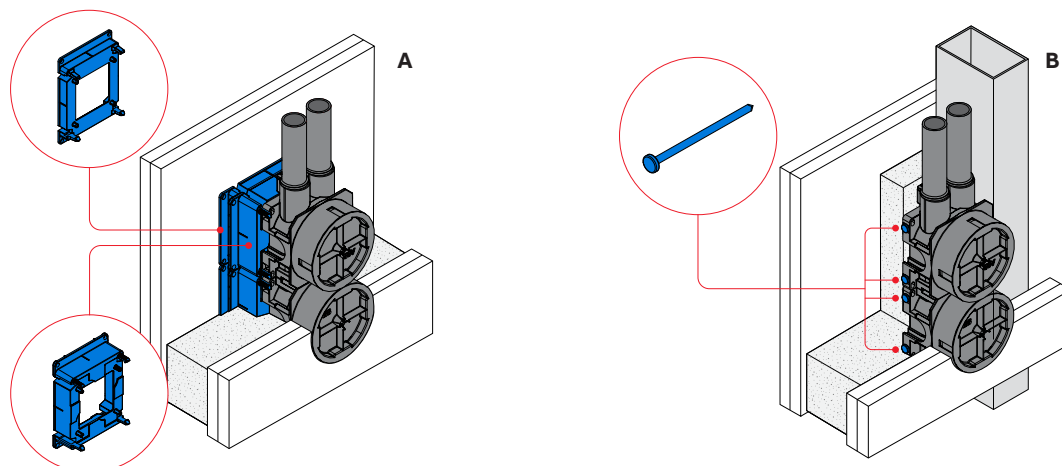


- Installation height max 2900 mm from floor (or min 100 mm from ceiling).
- Approved installations: A with plastic box support (AS27/AS27.12) and C with wooden board.

APPROVED INSTALLATIONS FOR COMBINATIONS:

— Installations:

A
B



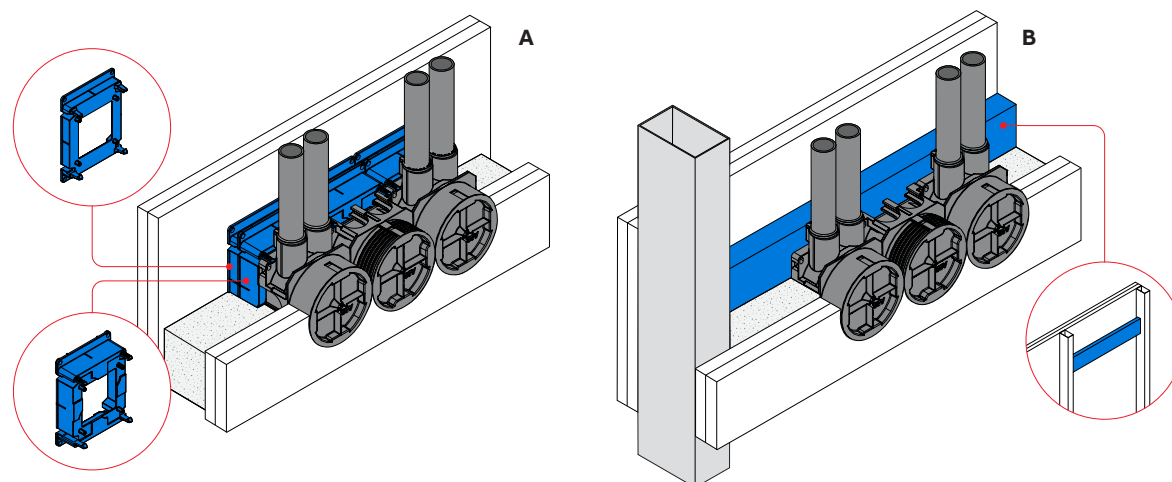
VERTICAL COMBINATION

- Max installation height 1100 mm from floor
- Max 2 boxes*
- Approved boxes AU60.1, AU60.10, AU60.5, AU5.6
- Approved installations: A: with plastic box support (AS27/AS27.12), B: nailing to frame

*AU60.10FR mounting box needs to be used with 3 box vertical combination

— Installations:

A
B

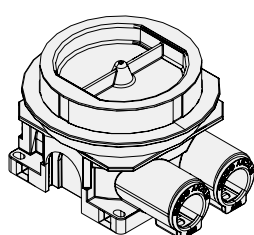


HORIZONTAL COMBINATION

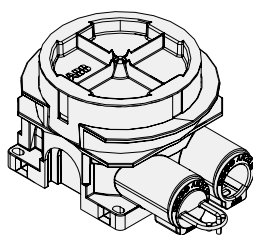
- Max installation height 300 mm from floor
- Max 3 boxes*
- Approved boxes AU60.1, AU60.10, AU60.5, AU5.6
- Approved installations: A: with plastic box support (AS27/AS27.12), B: with wooden board

*AU60.10FR mounting box needs to be used with 4 box horizontal combination

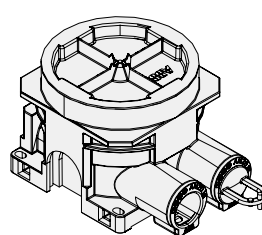
APPROVED BOXES FOR COMBINATIONS:



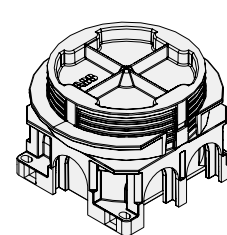
AU60.1



AU60.10



AU5.6



AU60.5

Example
installation:

