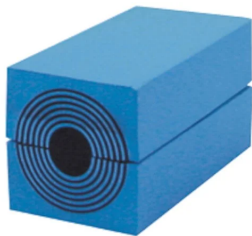




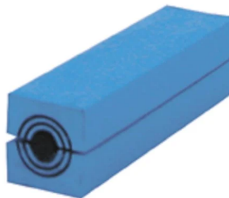
Roxtec RM module with Multidiameter™

Roxtec RM modules are 60 mm (2.362") deep and easy to adapt to cable and pipes of different sizes. When used with a solid core, the module functions as a spare module for future capacity.

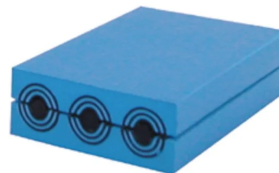
- To be used with corresponding Roxtec components to form a complete sealing solution
- For cables and pipes 3.0-99.0mm (0.118"-3.898") OD



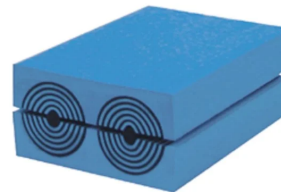
RM 30



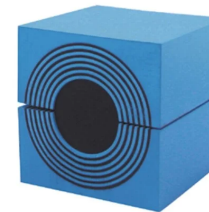
RM 15



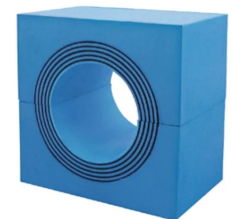
RM 15w40



RM 20w40



RM 60



RM 90 WOC

RM, with core

Product	Number of cables/pipes	For cable/pipe Ø (mm)	External dimensions WxHxD (mm)	Weight (kg)	Art. No
RM 15	1	3 - 11	15 x 15 x 60	0.02	RM00100151000
RM 15w40	3	3.5 - 10.5	40 x 15 x 60	0.05	RM00115401000
RM 20	1	4 - 14.5	20 x 20 x 60	0.04	RM00100201000
RM 20w40	2	3.5 - 16.5	40 x 20 x 60	0.07	RM00120401000
RM 30	1	10 - 25	30 x 30 x 60	0.08	RM00100301000
RM 30H90	1	10 - 25	30 x 90 x 60	0.25	103915
RM 40	1	21.5 - 34.5	40 x 40 x 60	0.14	RM00100401000
RM 40 10-32	1	9.5 - 32.5	40 x 40 x 60	0.14	RM00140101000
RM 60	1	28 - 54	60 x 60 x 60	0.32	RM00100601000

Product	Number of cables/pipes	For cable/pipe Ø (mm)	External dimensions WxHxD (mm)	Weight (kg)	Art. No
RM 60 24-54	1	24 - 54	60 x 60 x 60	0.33	RM00160201000
RM 80	1	48 - 71	80 x 80 x 60	0.6	5RM0000003350
RM 90	1	48 - 71	90 x 90 x 60	0.7	RM00100901000
RM 120	1	67.5 - 99	120 x 120 x 60	1.3	RM00101201000

RM, without core

Product	Number of cables/pipes	For cable/pipe Ø (mm)	External dimensions WxHxD (mm)	Weight (kg)	Art. No
RM 60 WOC	1	28 - 54	60 x 60 x 60	0.26	RM00000601000
RM 80 WOC	1	48 - 71	80 x 80 x 60	0.4	5RM0000000534
RM 90 WOC	1	48 - 71	90 x 90 x 60	0.6	RM00000901000
RM 120 WOC	1	67.5 - 99	120 x 120 x 60	0.9	RM00001201000